

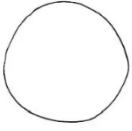
Sóley



Holtasaóley

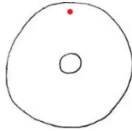


1



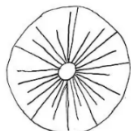
draw a circle

2



draw a smaller circle inside

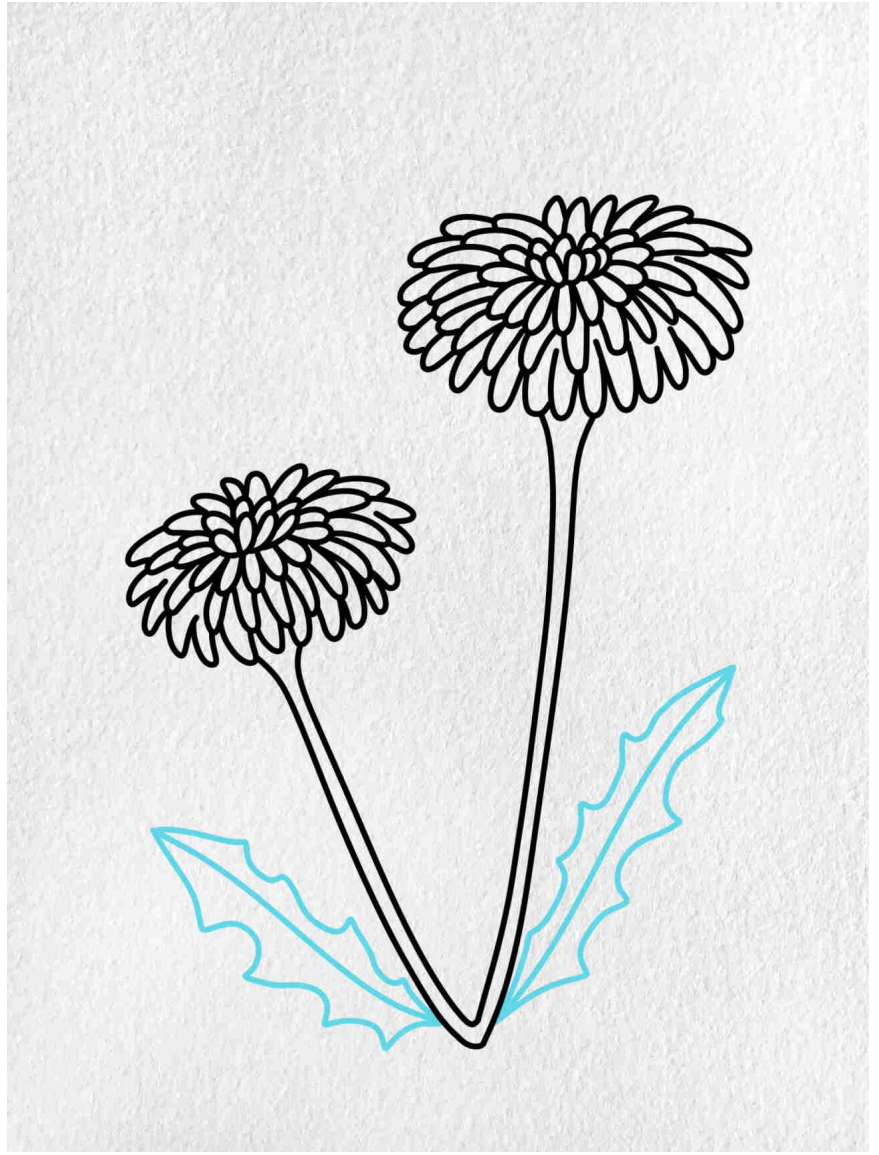
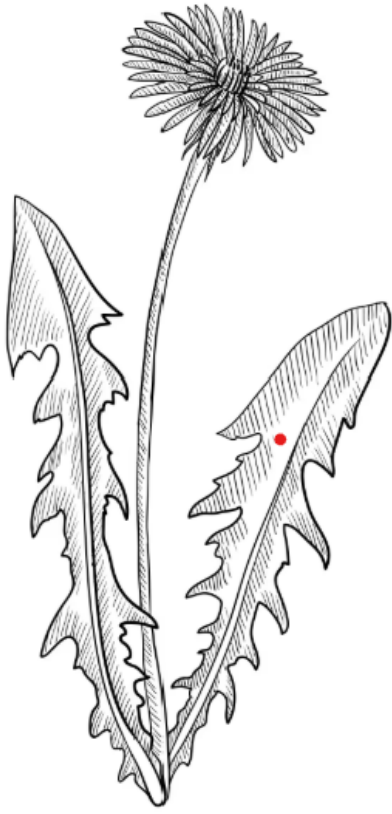
3

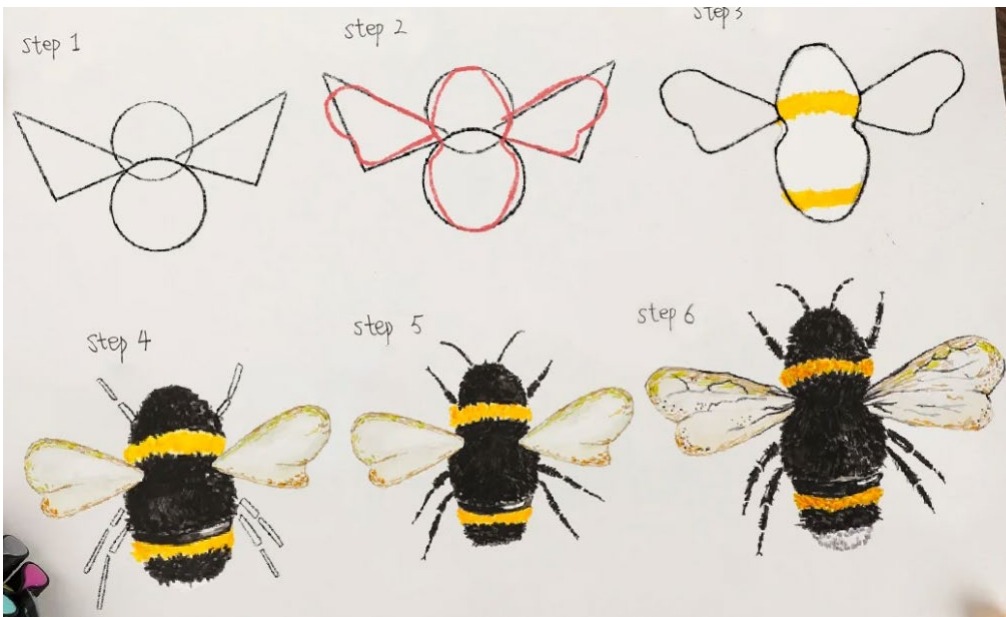


draw lines from inside out

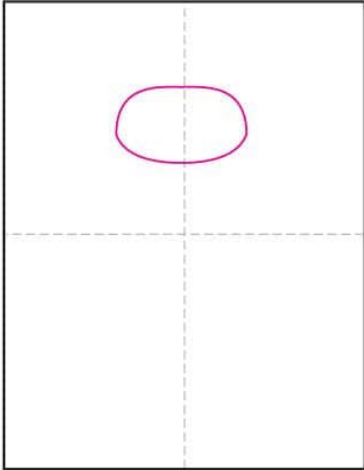
<https://easydrawingguides.com/how-to-draw-a-dandelion/>



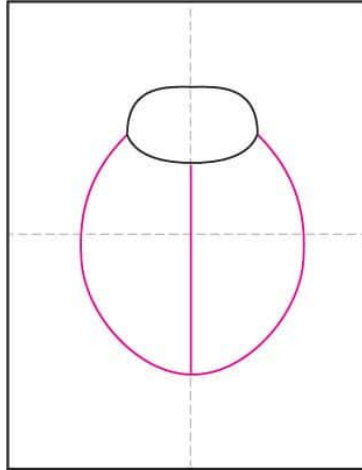




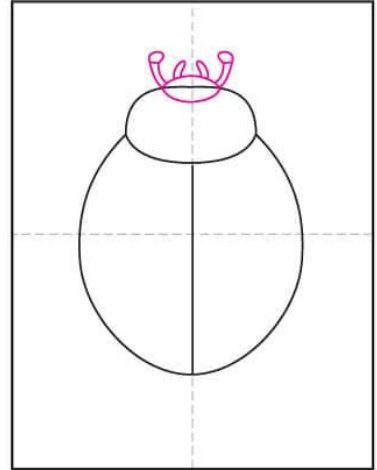
Ladybug



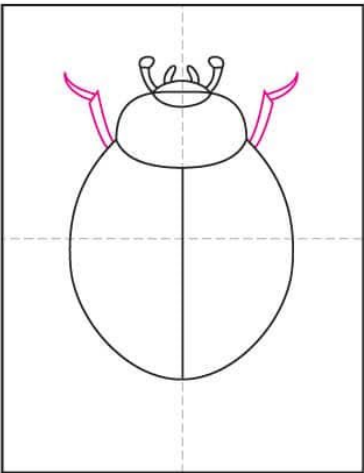
1. Draw the "pronotum".



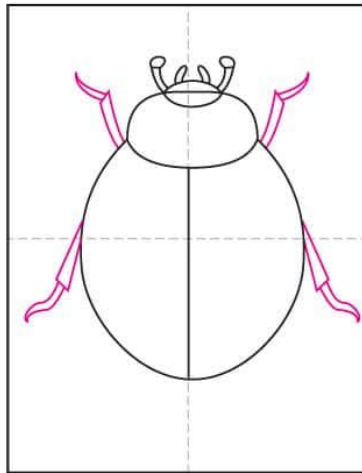
2. Draw "elytra" below.



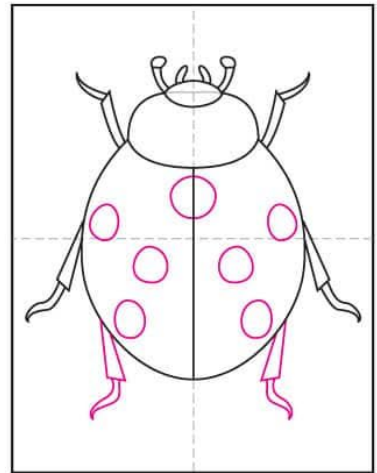
3. Add the head and antennae.



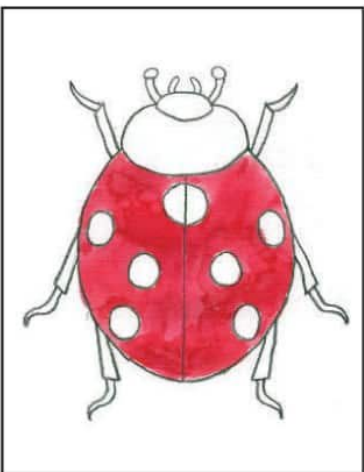
4. Draw two front legs.



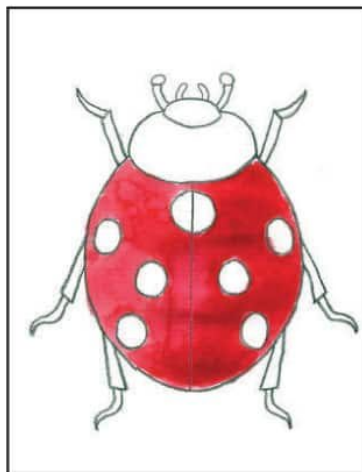
5. Add two middle legs.



6. Add back legs, and 7 spots.



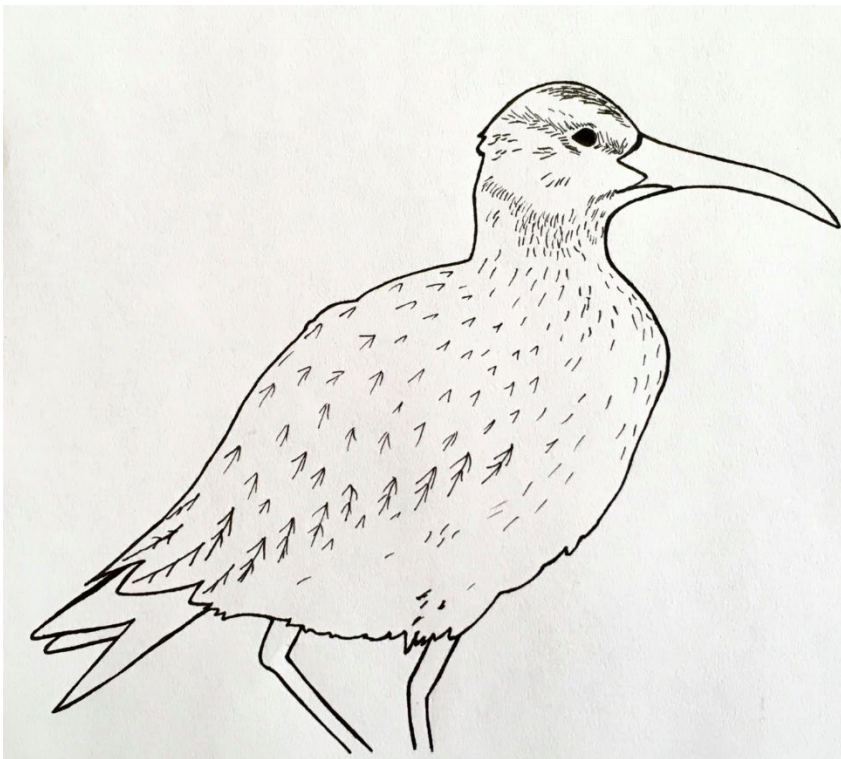
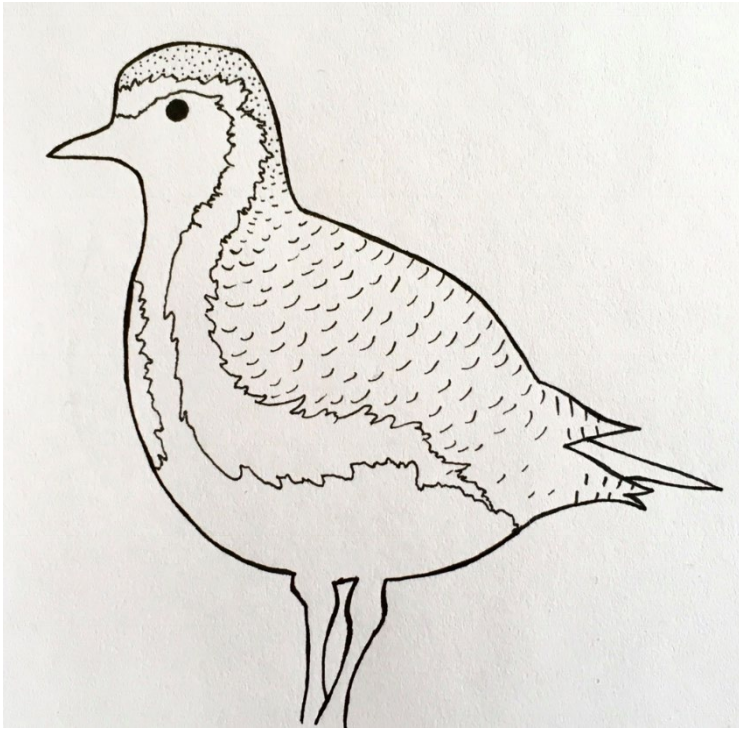
7. Trace with black crayon. Paint elytra red.



8. Add another layer of red on one side to create shadow.

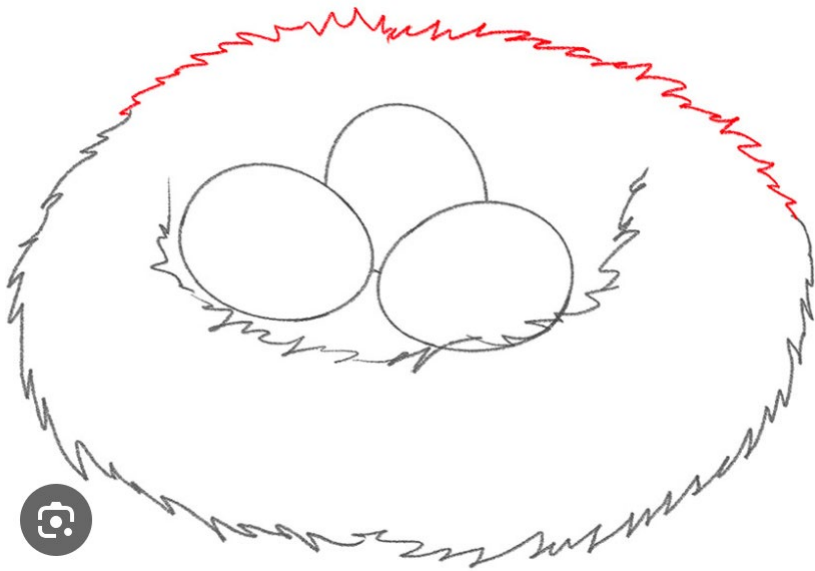
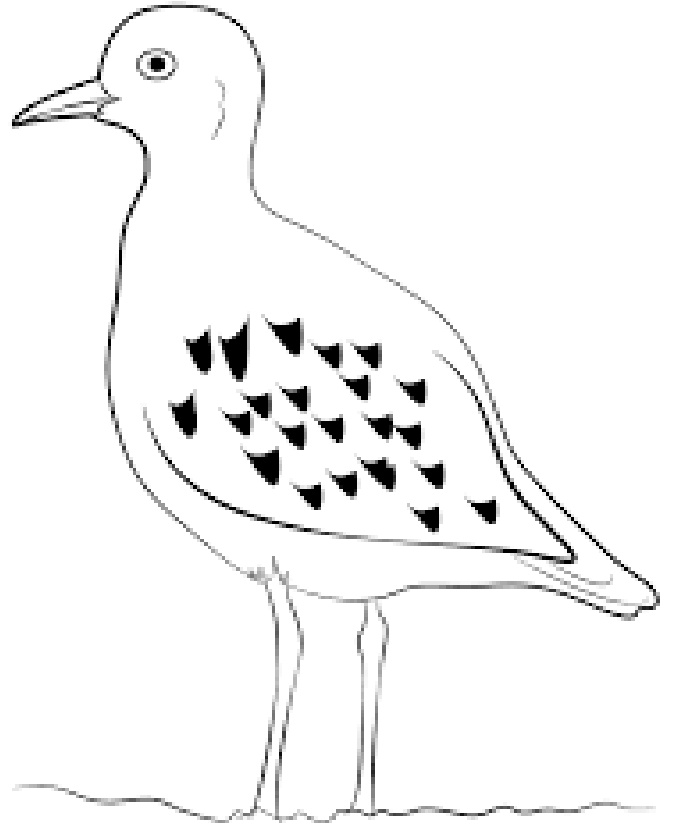
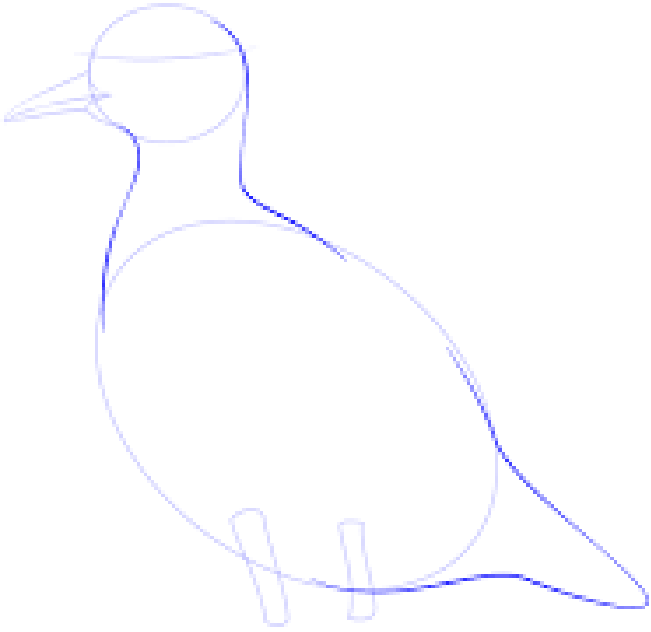


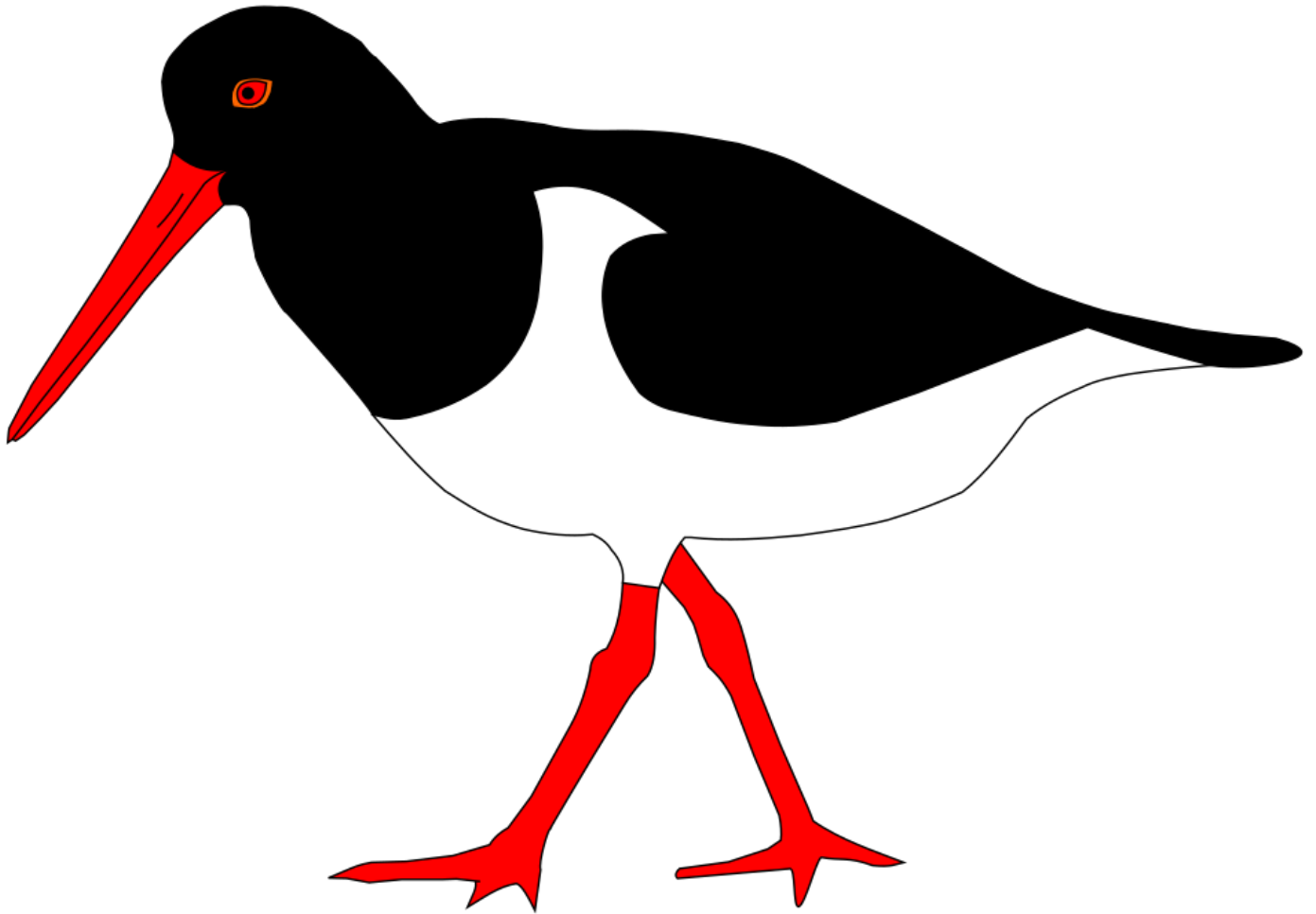
9. Paint the rest black, and the background with a contrasting color.





Step 4





5

